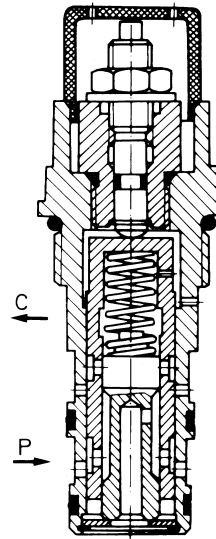




Two - port flow control valves ND.6,10,20

CARTRIDGE TYPE

- The two -port flow control valve regulates flow rate in hydraulic systems within a wide range regardless of the fluid pressure and temperature variations
- The two -port flow control valve can be fitted in the pressure line (at the input, of actuator) or on the return (output)
- By means of differential piston, constant difference of pressure is maintained on manually adjustable restrictor, owing to which the flow rate remains constant.



TECHNICAL DATA

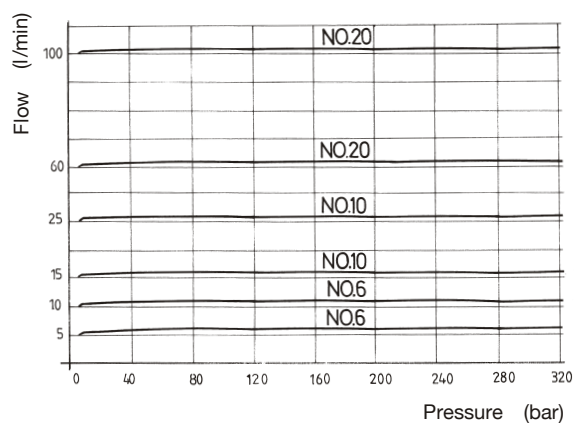
GENERAL

Nominal size	62	10	0
Symbol			
Mounting position	Optional		
Ambient temperature (°C)	... +50		
Mass (kg)	Valve	0,54	
	Block		

HYDRAULIC

Pressure (bar)	Input	5 to 320		
	Output	0 to 315		
Rated flow (l/min)	Min	0,25	0,51	1,0
	Max	10	25	100
Radna te-nost Working fluid	mineral oil			
	viscosity (mm ² s)	11,6 - 230		
	temperature (°C)	-20 ... +70		

CHARACTERISTIC DIAGRAM



DESIGNATION

FLOW CONTROL VALVE

Nominal size:
16 = ND. 6
03 = ND.10
15 = ND.20

129 - * 00

INSTALLATION BLOCK

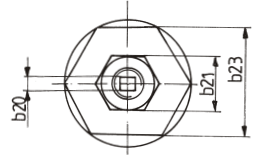
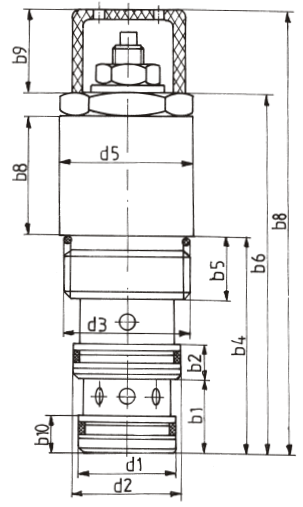
Nominal size:
1610 = ND. 6
0309 = ND.10
1509 = ND.20

129 - *

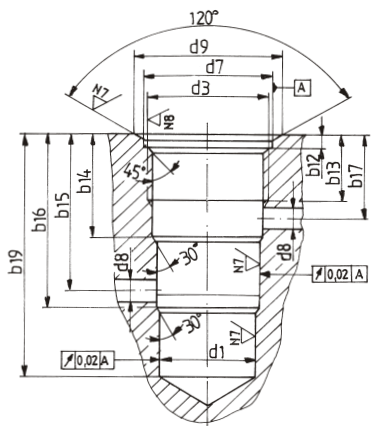
Note: O - rings are delivered together with the valves

MOUNTING DRAWING (dimensions in mm)

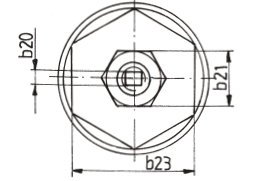
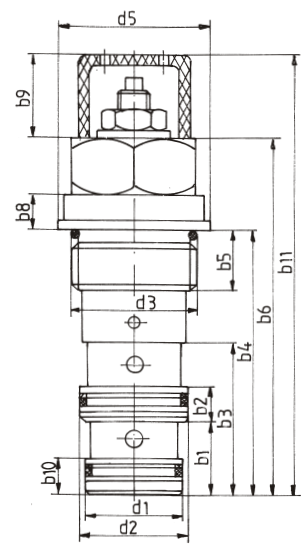
FLOW CONTROL VALVE ND.6



ND.6

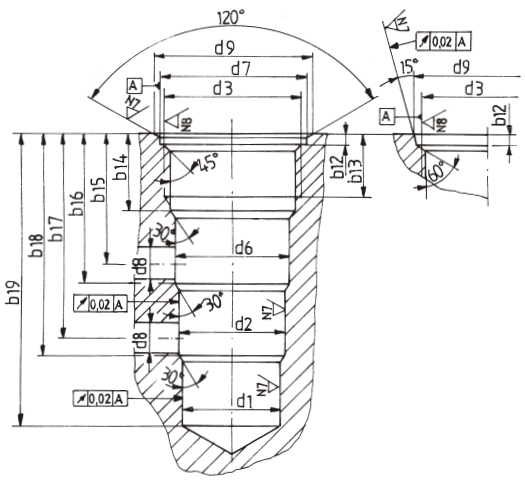


FLOW CONTROL VALVES ND.10, 20



ND.20

ND.10

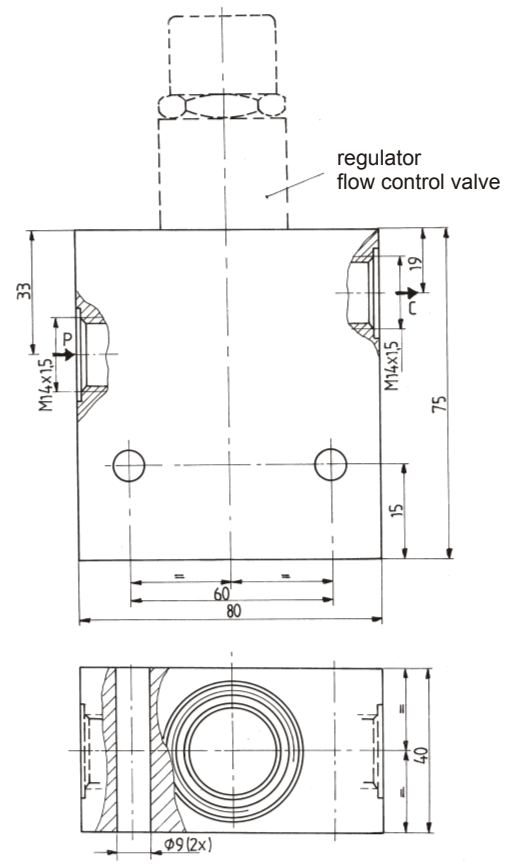


ND	b1	b2	b3	b4	b5	b8	b9	b10	b11	b12	b13	b14	b15	b16	b17	b18
6	16	19	-	46	14	36,5	25	9	121	3,5	16	24	33	37	19	-
10	23	8,5	44	77,5	17	11,5	22	12	127	3,5	16,5	23	38	44	59	65
20	29	12	58	96	20	17,5	33	11	163	4	19,5	26	46	55	75	84

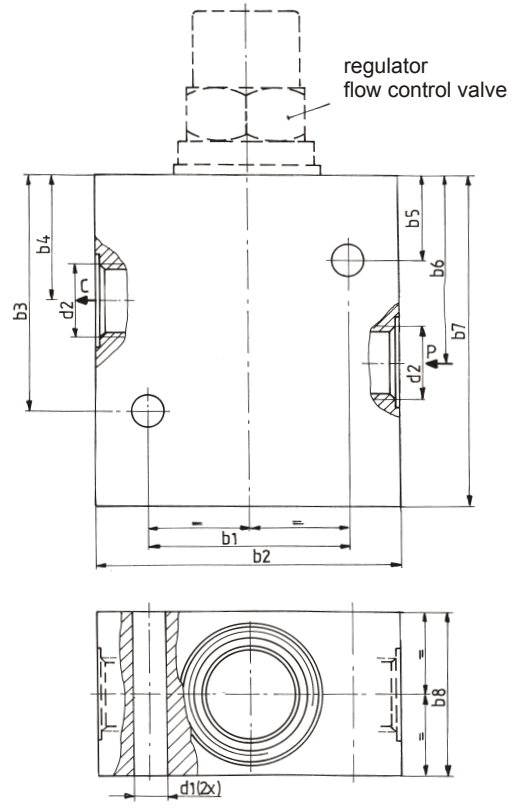
ND	b19	b20	b21	b23	d1	d2	d3	d5	d6	d7	d8	d9
6	52	6	OK17	OK30	∅ 22f8	∅ 24f8	M27x2	∅ 33	-	∅ 28,2	∅ 6	∅ 31
10	80	5	OK17	OK36	∅ 28f8	∅ 30f8	M36x2	∅ 44	∅ 32	∅ 49,2	∅ 11	∅ 38,5
20	100	6	OK17	OK46	∅ 40f8	∅ 42f8	M48x2	∅ 56	∅ 44	-	∅ 17	∅ 51

MOUNTING DRAWING (dimensions in mm)

INSTALLATION BLOCK ND. 6



INSTALLATION BLOCK ND. 10, 20



ND	b1	b2	b3	b4	b5	b6	b7	b8	d1	d2
6	60	80	15	33	-	19	75	40	∅ 9	M14x1,5
10	60	90	70	38	25	59	100	50	∅ 11	M22x1,5
20	84	114	90	46	25	75	120	62	∅ 11	M33x2

WARNING

Errors in the selection or use of the products and / or systems described, can cause serious personal injury and property damage. It is critical that all aspects of the application and the operating conditions and products chosen are analyzed and re-examined. Making own tests and evaluations, the user is the only one able to ensure compliance with performance, safety and cautionary use requirements.

The general sales conditions are provided by Revortex in the sales offer and in the order confirmation. Technical information, drawings, images and material characteristics in this catalog are just informative. Certifications or declarations must be required during the offer request phase.

The logo is owned by Revortex.

Descriptions, materials, product catalogs and price lists can be changed at any time without previous information.



Orders@revortex.eu



Technicalsupport@revortex.eu



Purchasing@revortex.eu

Revortex srl

Sede legale: Via Bruno Tosarelli, 23 - 40055 - Villanova di Castenaso - BO - Italy

Sede produttiva: Via Saragat, 26 - 40062 - Molinella - BO - Italy

info@revortex.eu - revortex.eu

PI 03738231202