

TECHNICAL DATA

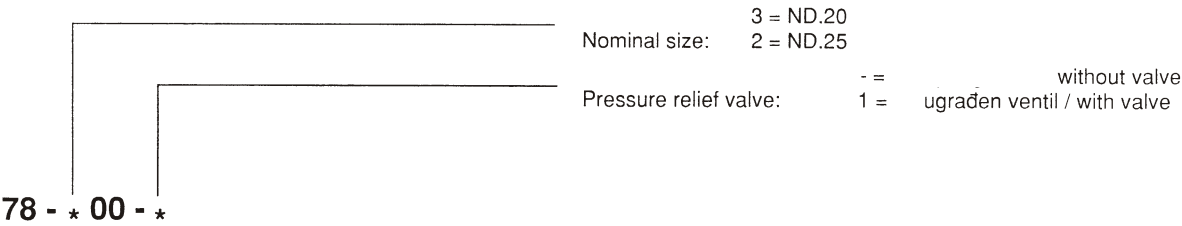
GENERAL

| | | |
|--------------------------|--|----|
| Nominal size | 20 | 25 |
| Symbol | <div>Without pressure releif valve</div> <div>With pressure releif valve</div> | |
| Mounting method | Directly upon the hydraulic motor | |
| Ambient temperature (°C) | ...+50 | |
| Mass (kg) | | |

HYDRAULIC

| | | |
|-------------------------|-------------------|------------|
| Nominal flow (l/min) | 210 | 320 |
| Working pressure (bar) | 315 (350) | |
| Cracking pressure (bar) | See diagrams | |
| Working fluid | mineral oil | |
| | viscosity (mm²/s) | 11,6 - 230 |
| | temperature (°C) | -20 – +70 |

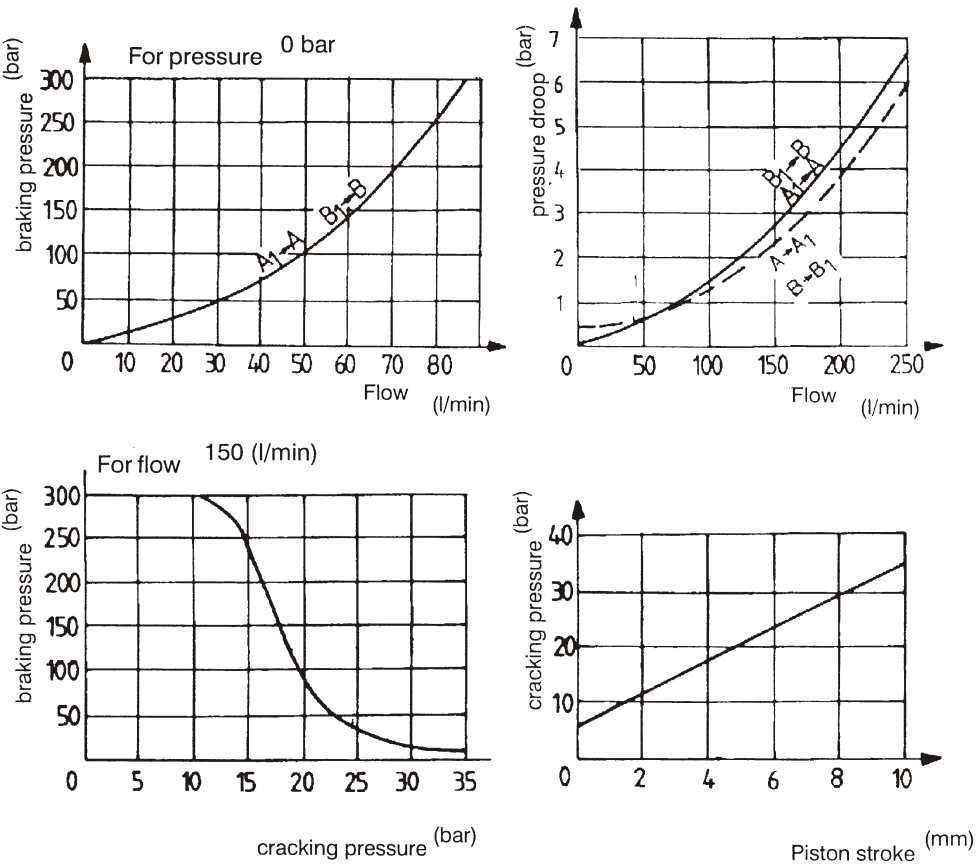
DESIGNATION



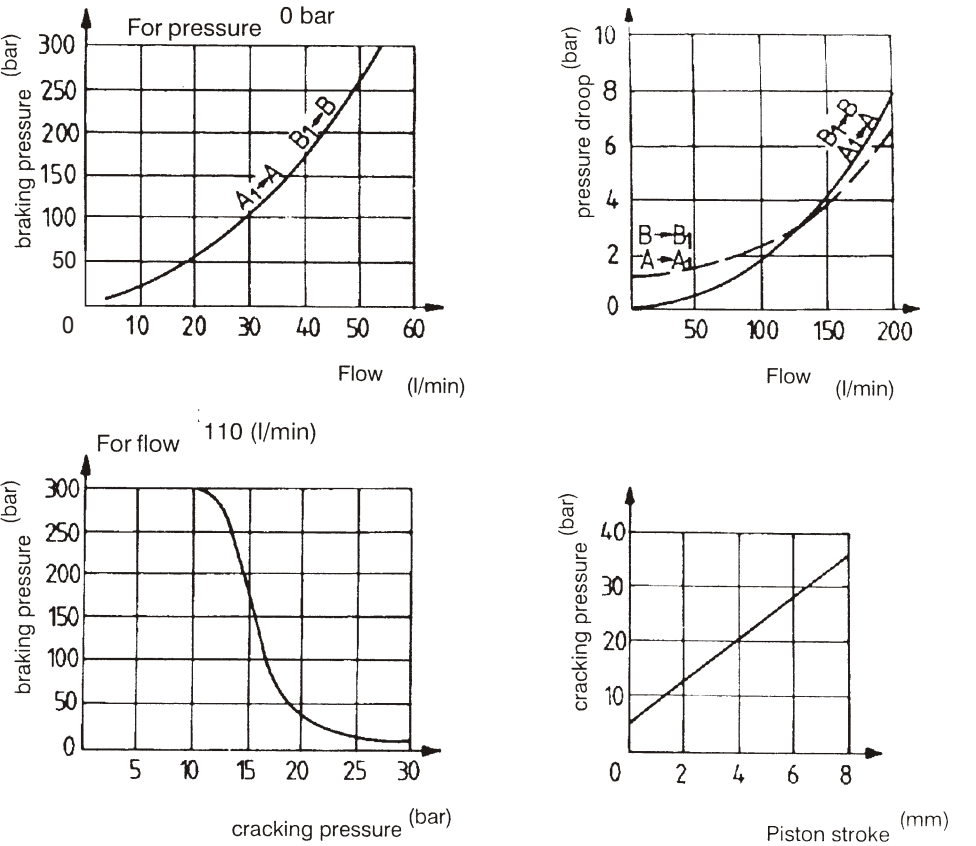
Note: 1.O - rings are delivered together with the valves
2.when ordering please indicate pressure on the valve.It will be in our factory regulated

CHARACTERISTIC DIAGRAMS

ND 25

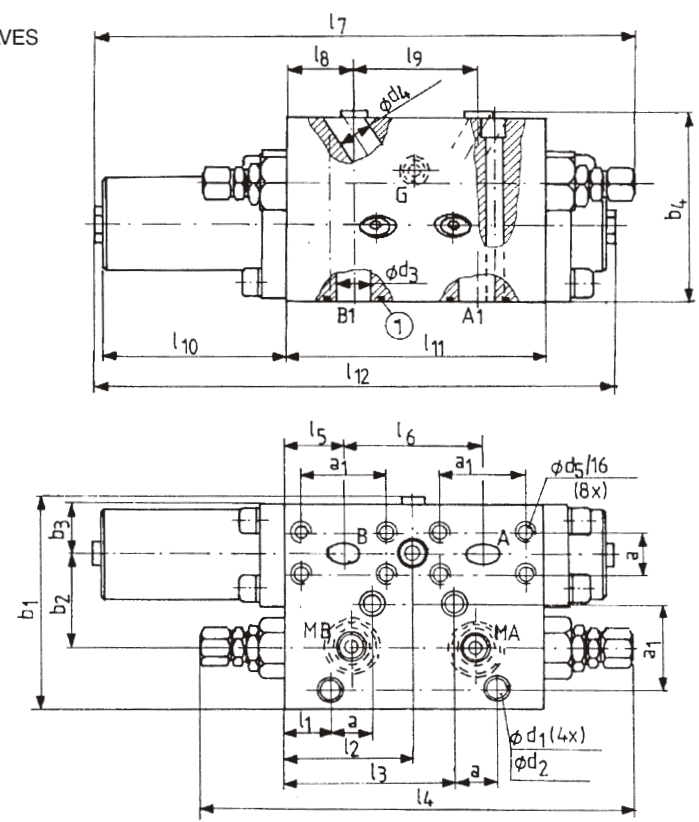


ND 20



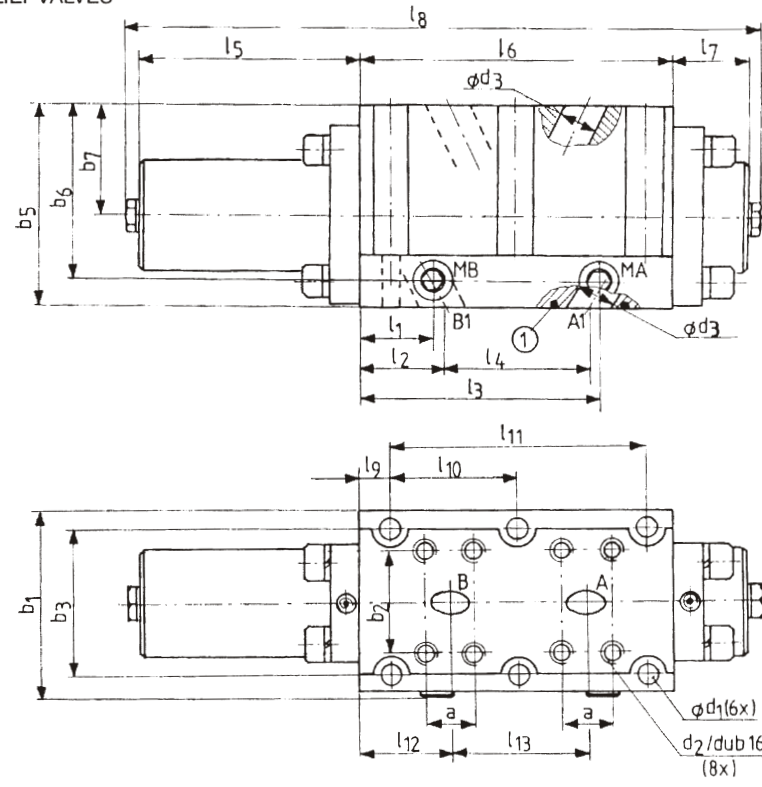
MOUNTING DRAWING (dimensions in mm)

BRAKING VALVES WITH PRESSURE RELIEF VALVES



| ND | l ₁ | l ₂ | l ₃ | l ₄ | l ₅ | l ₆ | l ₇ | l ₈ | l ₉ | l ₁₀ | l ₁₁ | l ₁₂ | a | a ₁ | d ₁ | d ₂ | d ₃ | d ₄ | d ₅ | b ₁ | b ₂ | b ₃ | b ₄ |
|----|----------------|----------------|----------------|----------------|----------------|----------------|----------------|----------------|----------------|-----------------|-----------------|-----------------|------|----------------|----------------|----------------|----------------|----------------|----------------|----------------|----------------|----------------|----------------|
| 20 | 28,1 | 73 | 94,1 | 275 | 33 | 80 | 310 | 40 | 66 | 93 | 146 | 288 | 23,8 | 50,8 | 11 | 17 | 20 | 19 | 10 | 123 | 53 | 29 | 117 |
| 25 | 31,1 | 86 | 113,1 | 291 | 39,5 | 93 | 359 | 45 | 82 | 121 | 172 | 345 | 27,8 | 57,2 | 13 | 20 | 25 | 23 | 12 | 140 | 62 | 33,5 | 124 |

BRAKING VALVES WITHOUT PRESSURE RELIEF VALVES



| ND | l ₁ | l ₂ | l ₃ | l ₄ | l ₅ | l ₆ | l ₇ | l ₈ | l ₉ | l ₁₀ | l ₁₁ | l ₁₂ | l ₁₃ | a | d ₁ | d ₂ | d ₃ | b ₁ | b ₂ | b ₃ | b ₅ | b ₆ | b ₇ |
|----|----------------|----------------|----------------|----------------|----------------|----------------|----------------|----------------|----------------|-----------------|-----------------|-----------------|-----------------|------|----------------|----------------|----------------|----------------|----------------|----------------|----------------|----------------|----------------|
| 20 | 35 | 40 | 111 | 66 | 93 | 146 | 37 | 288 | 13 | 60 | 120 | 41,5 | 63 | 23,8 | 11 | 10 | 19 | 92 | 50,8 | 70 | 96 | 82 | 59 |
| 25 | 40 | 45 | 132 | 82 | 121 | 172 | 40 | 345 | 17 | 69 | 138 | 49,5 | 56 | 27,8 | 13 | 12 | 24 | 104 | 57,2 | 80 | 111 | 97 | 61 |

WARNING

Errors in the selection or use of the products and / or systems described, can cause serious personal injury and property damage. It is critical that all aspects of the application and the operating conditions and products chosen are analyzed and re-examined. Making own tests and evaluations, the user is the only one able to ensure compliance with performance, safety and cautionary use requirements.

The general sales conditions are provided by Revortex in the sales offer and in the order confirmation.

Technical information, drawings, images and material characteristics in this catalog are just informative.

Certifications or declarations must be required during the offer request phase.

The logo is owned by Revortex.

Descriptions, materials, product catalogs and price lists can be changed at any time without previous information.



Orders@revortex.eu



Technicalsupport@revortex.eu



Purchasing@revortex.eu

Revortex srl
Sede legale: Via Bruno Tosarelli, 23 - 40055 - Villanova di Castenaso - BO - Italy
Sede produttiva: Via Saragat, 26 - 40062 - Molinella - BO - Italy
info@revortex.eu - revortex.eu
PI 03738231202