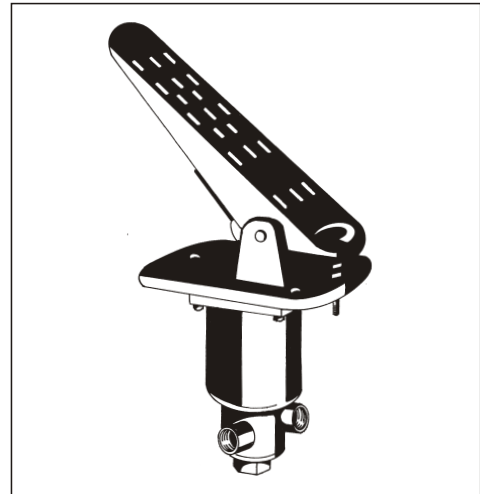
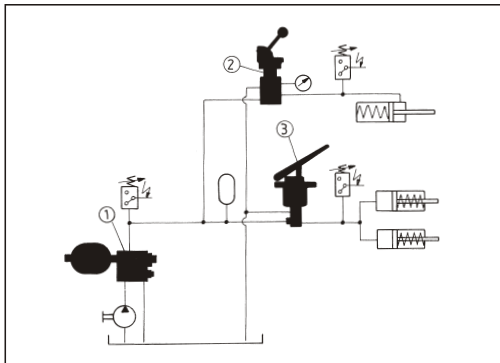


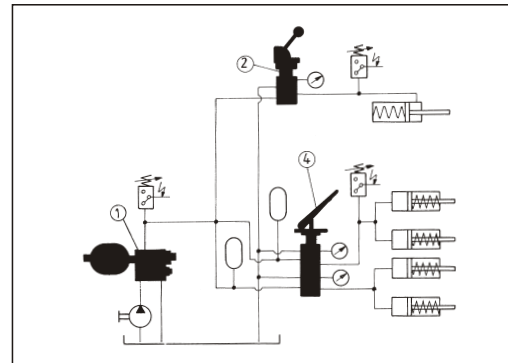
- Direct control pressure valves
- Brake valves is applied on building - constructions mobile machines:
 - type 215 - 9100 for brake hydraulic system and braking by stoppage position of machine
 - type 215 - 20100 for single circuit brake hydraulic system and braking at two wheels (in drive position)
 - type 215 - 9000 for dual circuit brake hydraulic system and braking at four wheels (in drive position)
- Smoothly control of brakes force by proportional pressure - reducing valve depending on the hand lever position
- Mechanical lock up / unlock position of control lever, for valve 215 - 9100



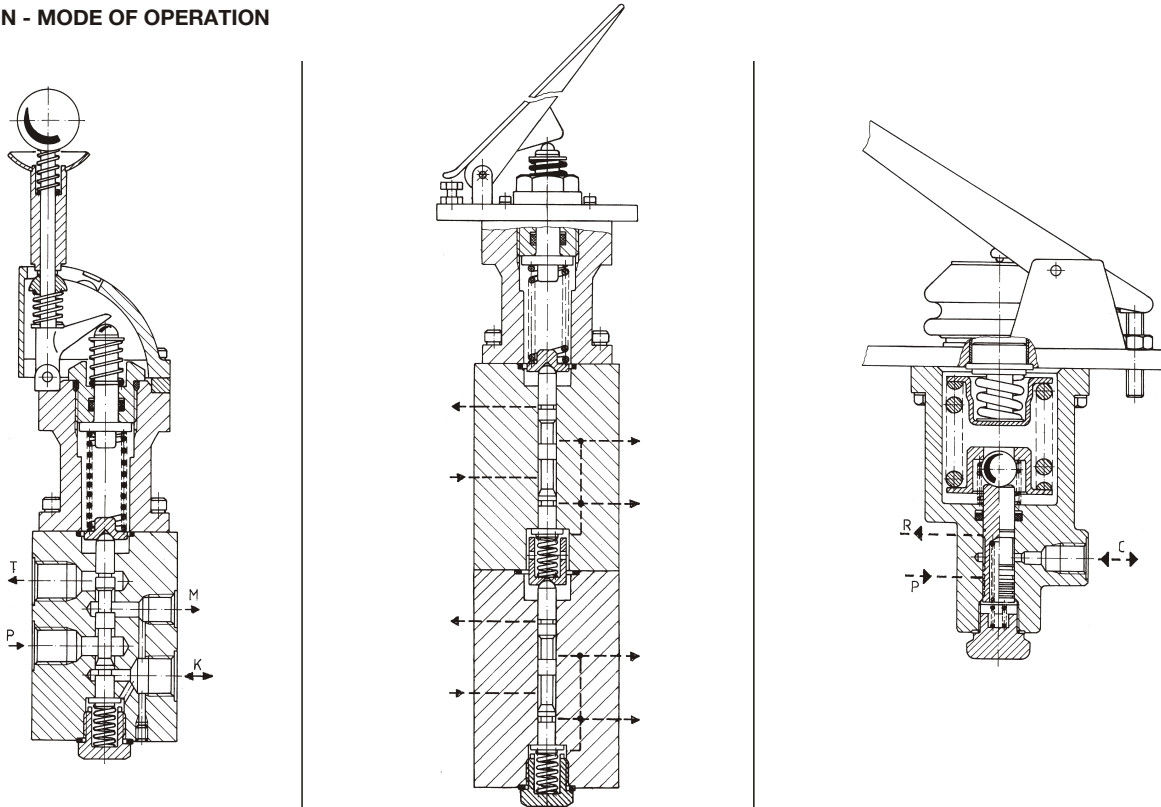
SINGL CIRCUIT BRAKE SYSTEM



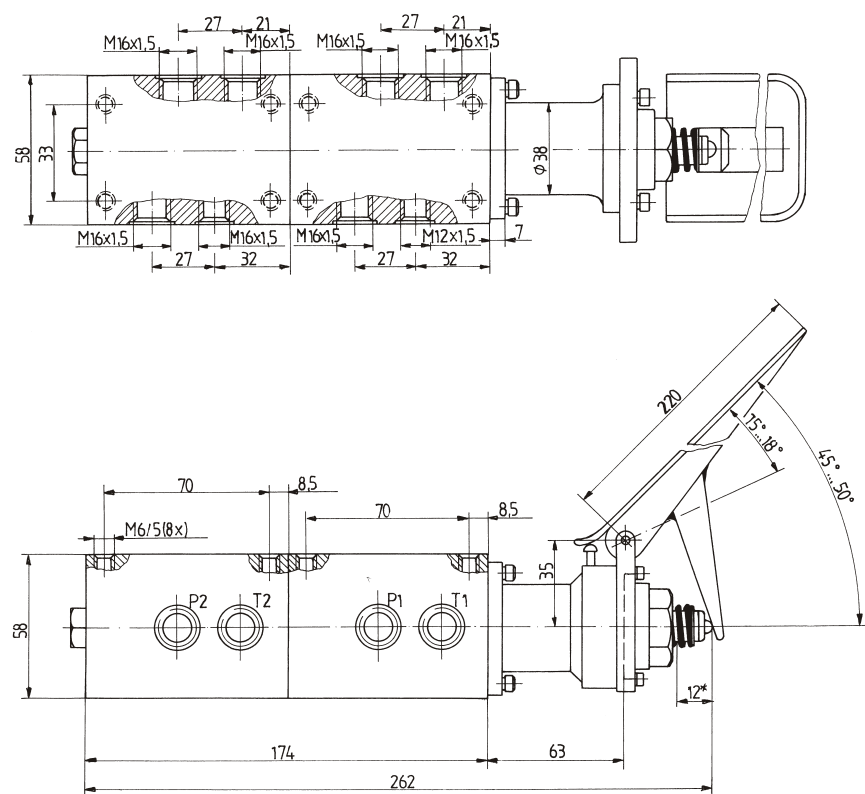
DUAL CIRCUIT BRAKE SYSTEM



SECTION - MODE OF OPERATION

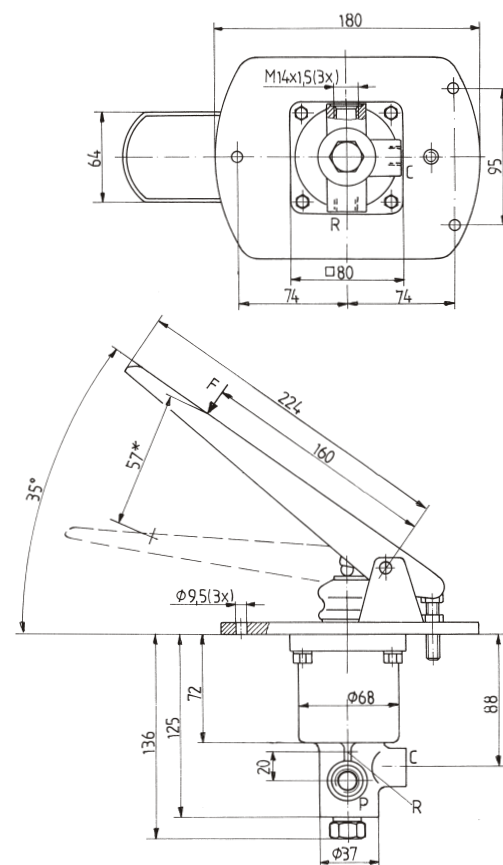


215 - 9000



* Piston stroke

215 - 20100



* Pedal stroke

Descriptions, materials, product catalogs and price lists can be changed at any time without previous information.



Orders@revortex.eu



Technicalsupport@revortex.eu



Purchasing@revortex.eu

PI 03738231202