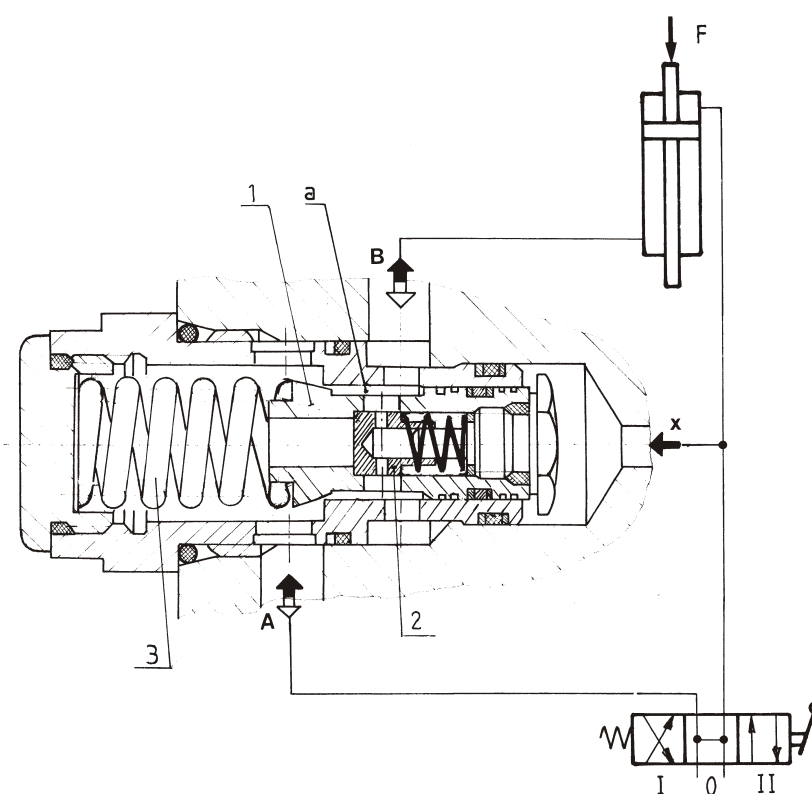
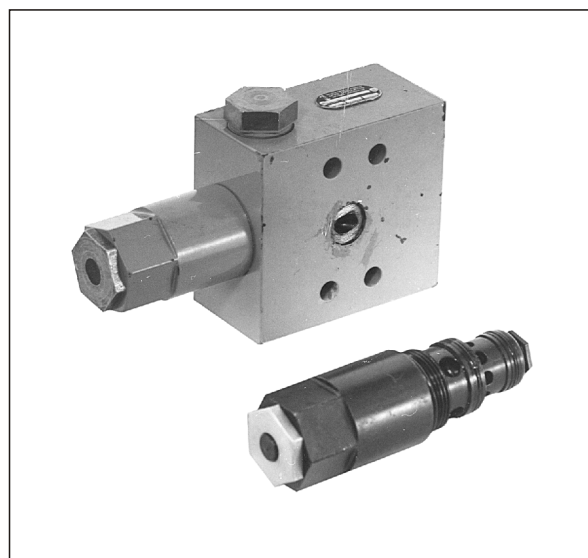


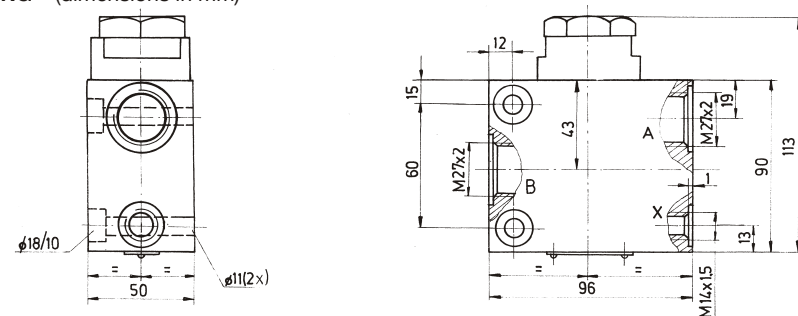
- Braking valves are applied in open systems for regulation of speed in hydraulic motors and cylinders independently of load. They have one additional function - protection in the event of a sudden line breakage
- They operate as by-pass valves, since opposite flow is free
- There are variants of braking valves for regulation the pressure and the return line in the system - double braking valve in one housing
- Mounting: they are mostly installed directly in cylinders (cartridge) and as a special variants, they can be installed in pipelines or in subplates



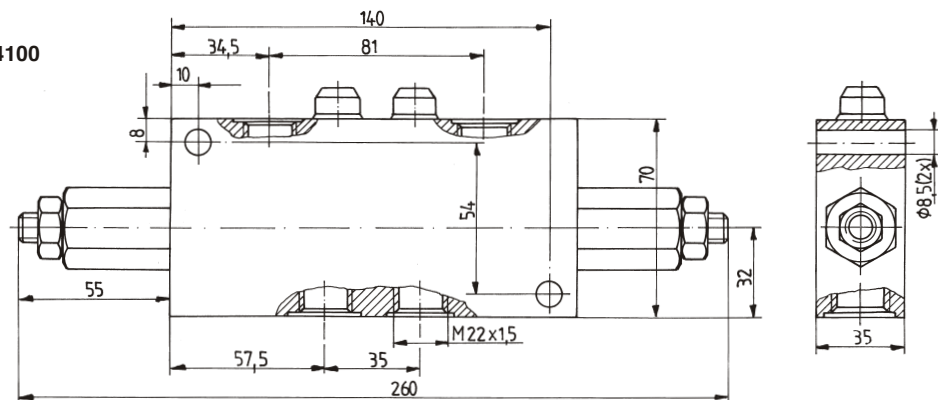
1. Throttle piston
2. Check valve
3. Spring
4. Housing

MOUNTING DRAWING (dimensions in mm)

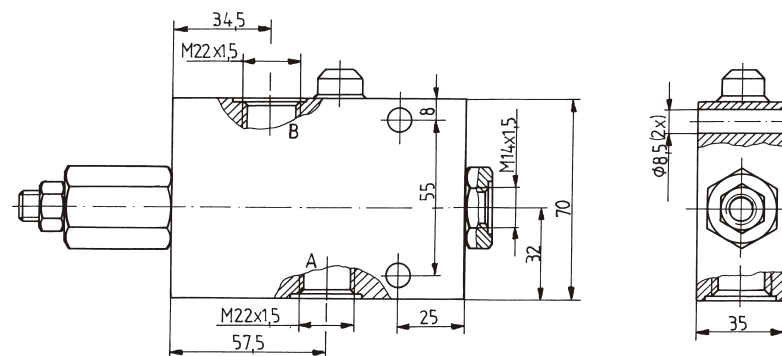
78 - 2500



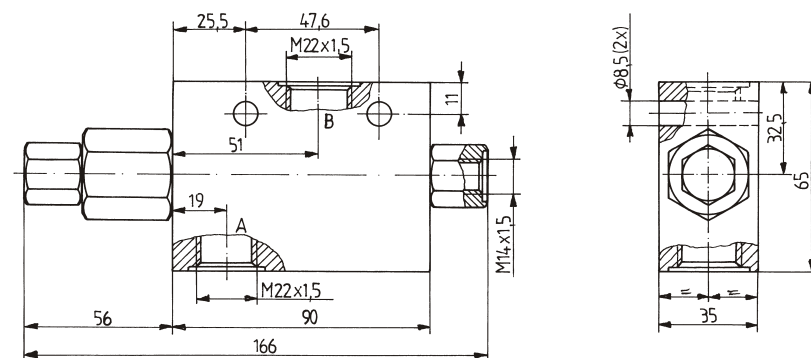
78 - 4100



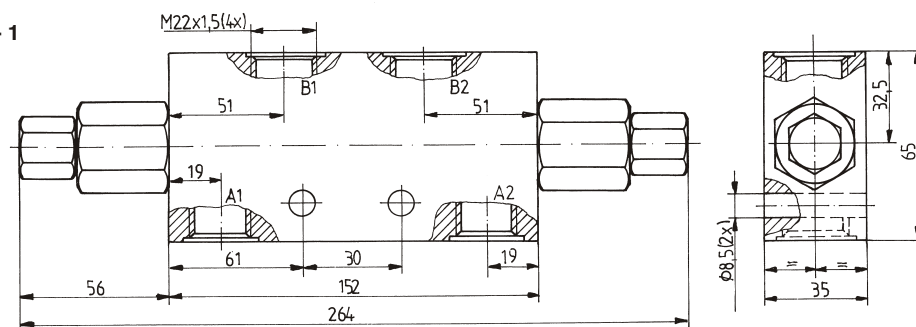
78 - 5100



78 - 6300



78 - 6400 - 1



WARNING

Errors in the selection or use of the products and / or systems described, can cause serious personal injury and property damage. It is critical that all aspects of the application and the operating conditions and products chosen are analyzed and re-examined. Making own tests and evaluations, the user is the only one able to ensure compliance with performance, safety and cautionary use requirements.

The general sales conditions are provided by Revortex in the sales offer and in the order confirmation.

Technical information, drawings, images and material characteristics in this catalog are just informative.

Certifications or declarations must be required during the offer request phase.

The logo is owned by Revortex.

Descriptions, materials, product catalogs and price lists can be changed at any time without previous information.



Orders@revortex.eu



Technicalsupport@revortex.eu



Purchasing@revortex.eu

Revortex srl

Sede legale: Via Bruno Tosarelli, 23 - 40055 - Villanova di Castenaso - BO - Italy

Sede produttiva: Via Saragat, 26 - 40062 - Molinella - BO - Italy

info@revortex.eu - revortex.eu

PI 03738231202