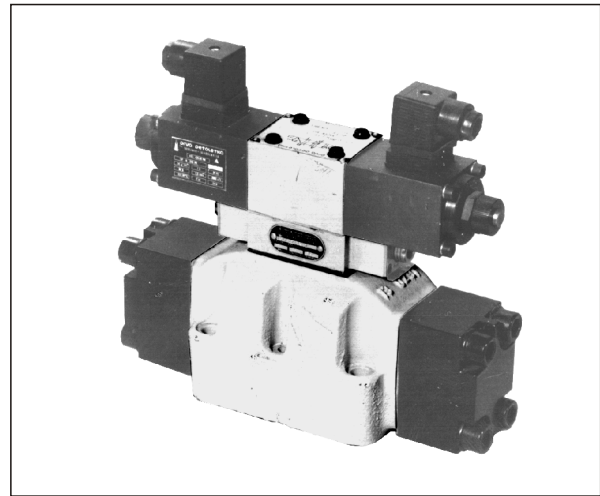
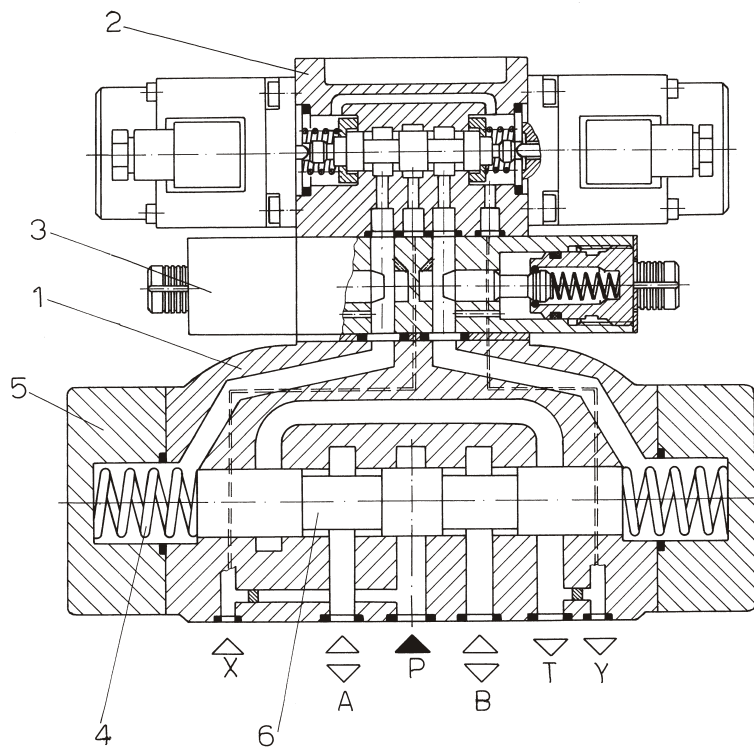


SPOOL TYPE, SOLENOID CONTROLLED PILOT OPERATED

- Simple design with axially sliding spool
- Housing made of high - grade nodular casting
- Many variants of directional control
- Good pressure balancing, small operating force
- External for internal hydraulic control
- The directional control valve consist of a solenoid controlled valve (ND 6 or ND10) and of a pilot operated directional valve
- Between these valves a throttle check valve can be mounted to control the shifting speed of the sliding spool of the hydraulically pilot directional valve (mounting: sandwich system)



SECTION - MODE OF OPERATION

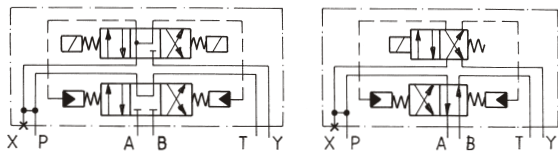


1. Housing
2. Directional control valve
3. Check - throttle valve
4. Spring
5. Cover
6. Spool

SYMBOLS (examples)

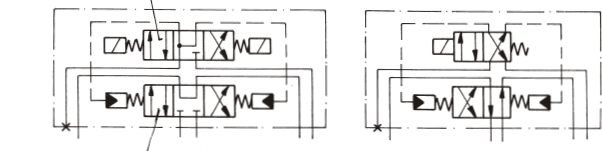
Internal control

External control



Pilot valve

Main valve



TECHNICAL DATA

GENERAL

Nominal size	16	20	32	
Symbol	See designation			
Mounting method	On subplate			
Mounting position	Optional			
Ambient temperature (°C)	...+50			
Pilot valve	Symbols C	code:177 - 0100 T	code:177 - 0200 T	code:177 - 0200 T
	Symbols D,E,F,G,H,K,L,M	code:177 - 0100 H	code:177 - 0200 H	code:177 - 0200 H
Mass (kg)	Symbols C	13	22	43
	Symbols D,E,F,G,H,K,L,M	13,7	23,6	44,6

HYDRAULIC

Pressure (bar)	External - lines A,B,P (X open)	max 315
	Internal - lines A,B,P (X closed)	max 210
	External drain - line T (Y open)	max 210
	Vod Y / line Y	max 210
Flow (l/min)		Directly to reservoir
		See table
Working fluid	mineral oil	
	viscosity (mm ² /s)	11,6 - 230
	temperature (°C)	-20 ... +70

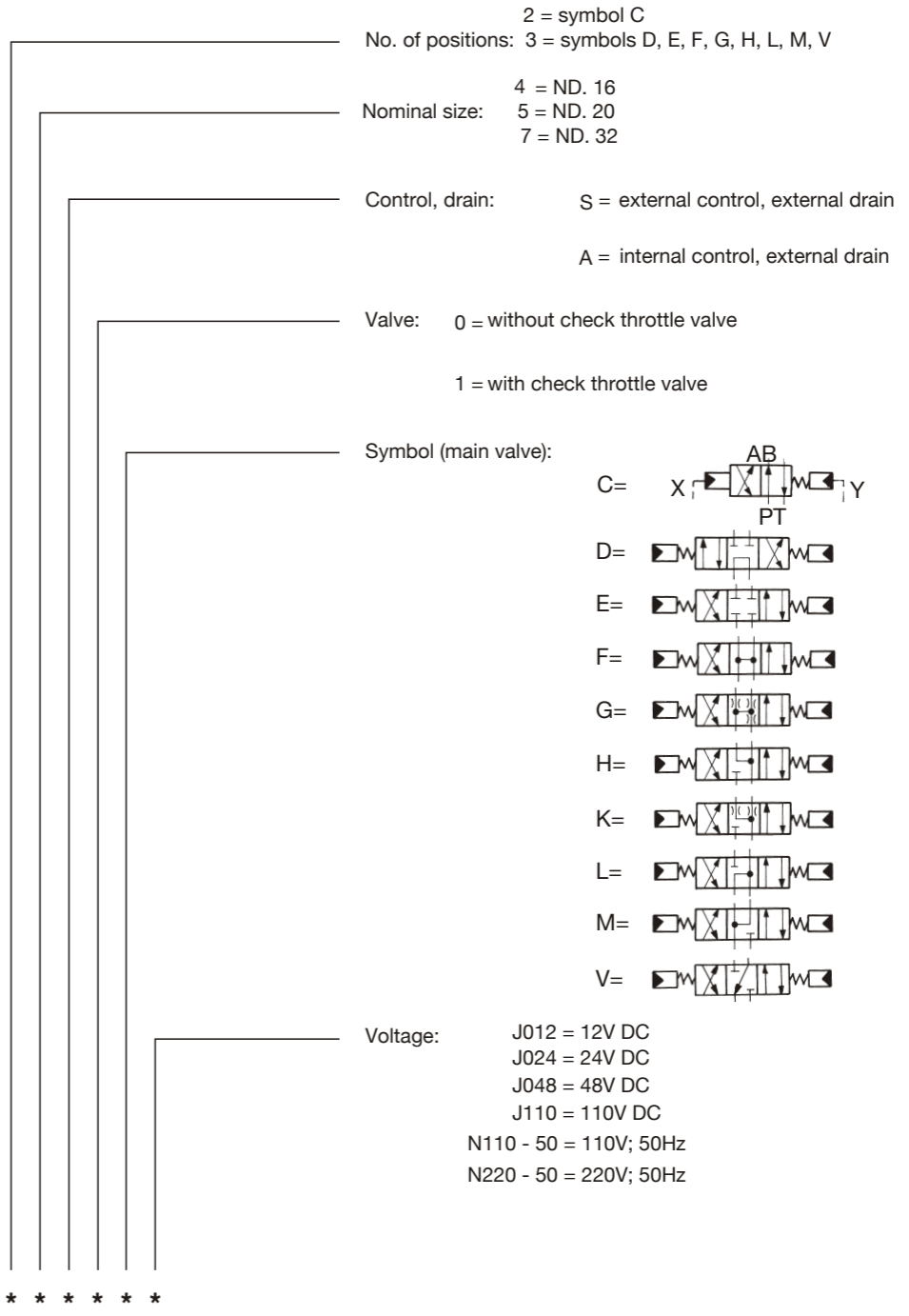
ELECTRICAL

Voltage (V)	DC	12; 24; 48; 110; 220	
	AC	110; 220	
Frequency (Hz)	DC	0	
	AC	50; 60	
Solenoid. Nominal amperge (A)	DC	3,1; 1,5; 0,78; 0,3; 0,13	4,2; 2,1; 1; 0,4; 0,18;
	AC		
Relative duty factor (ED)		100%	
Waterproof		IP 54	

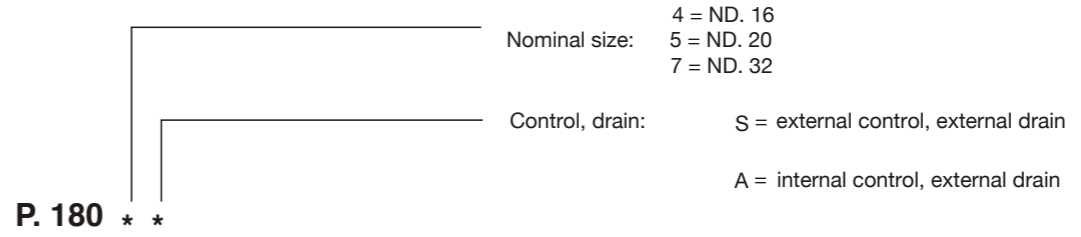
ND	Pressure (bar)	Flow (l/min)	
		symbols C, E, H, M	symbols D, F, L
16	70	180	140
	140	160	120
	210	130	100
	315	100	80
20	70	300	200
	140	280	180
	210	250	160
	315	200	120
32	70	500	320
	140	450	280
	210	380	250
	315	220	200

DESIGNATION

VALVES



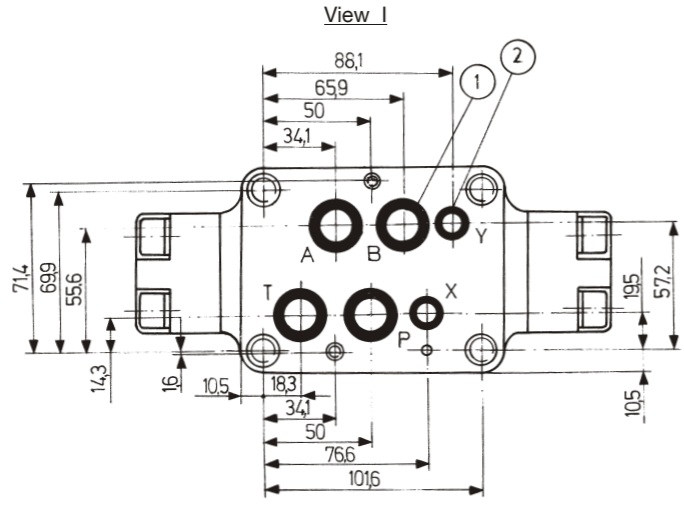
SUBPLATES (see chapter **M**)



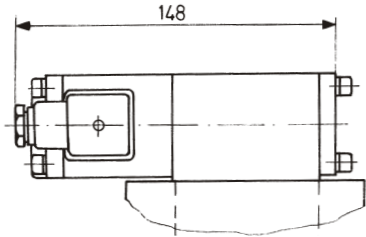
Note: O - rings are delivered together with the valves

MOUNTING DRAWING (dimensions in mm)

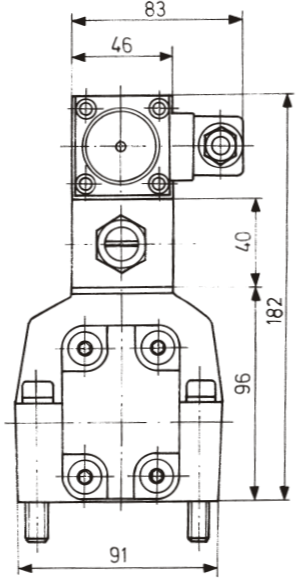
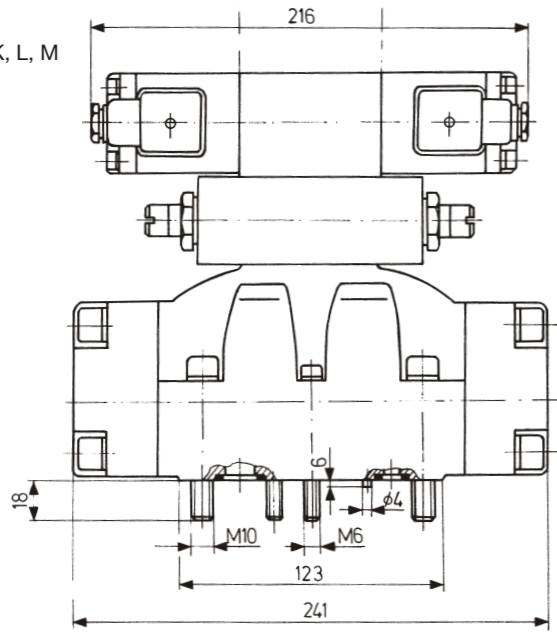
ND. 16



Symbol: C



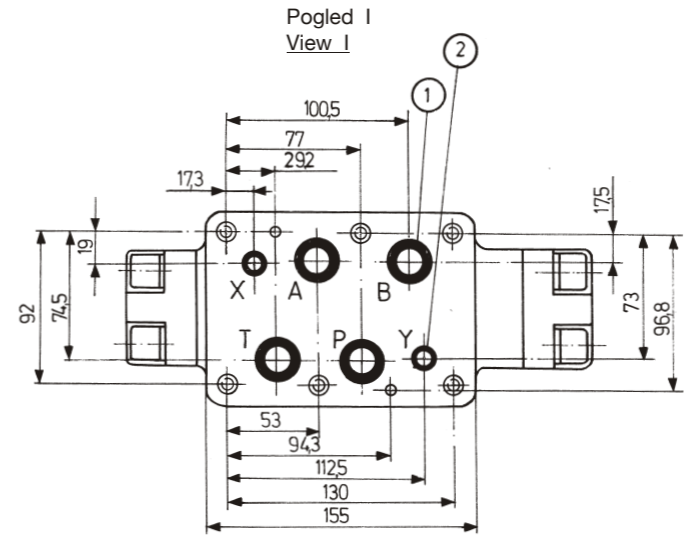
Symbols: D, E, F, G, H, K, L, M



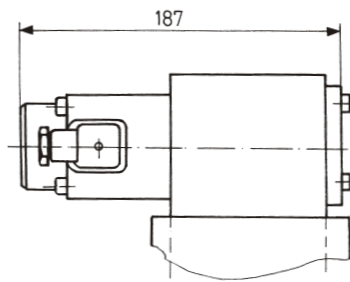
- ① O - ring 20,3x2,4
- ② O - ring 14,3x2,4

MOUNTING DRAWING (dimensions in mm)

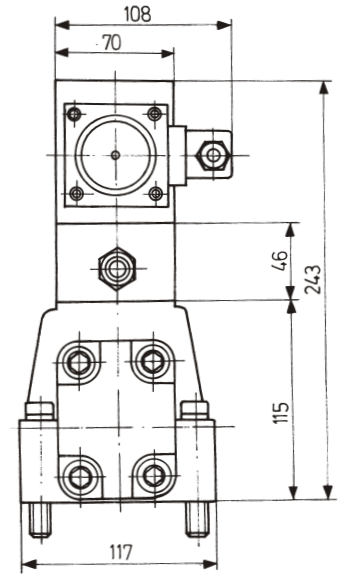
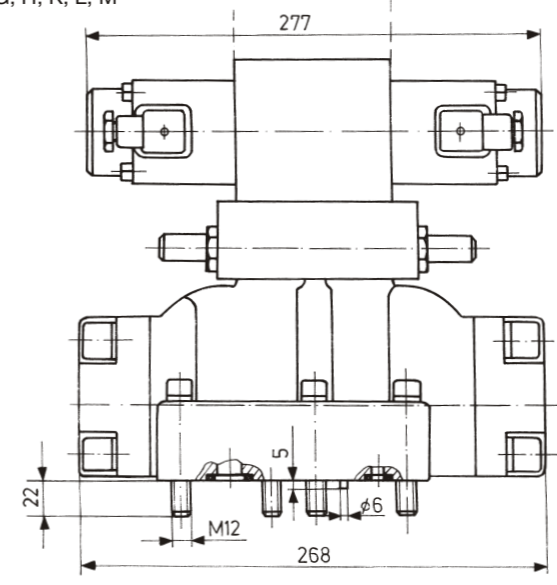
ND. 20



Symbol: C



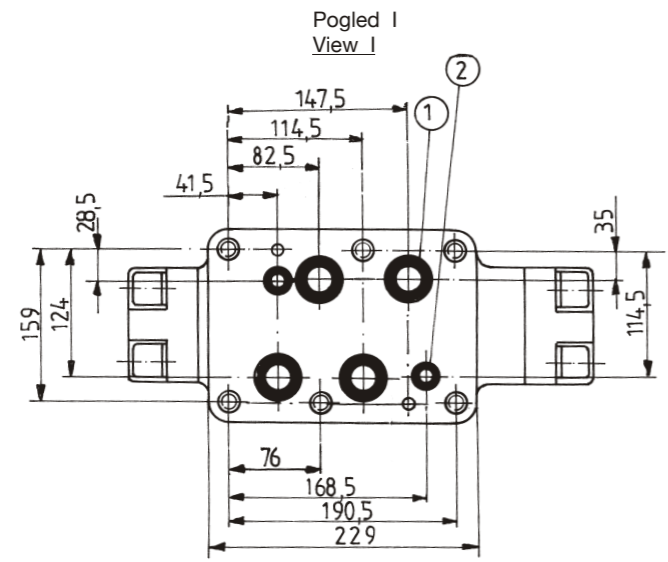
Symbols: D, E, F, G, H, K, L, M



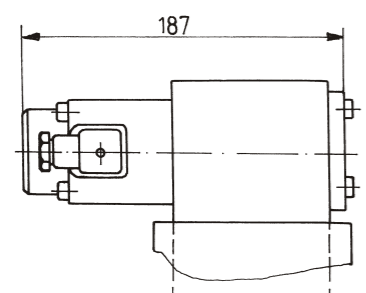
- ① O - ring 25,3x2,4
- ② O - ring 15,3x2,4

MOUNTING DRAWING (dimensions in mm)

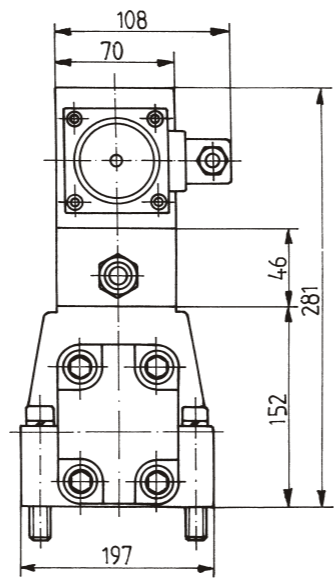
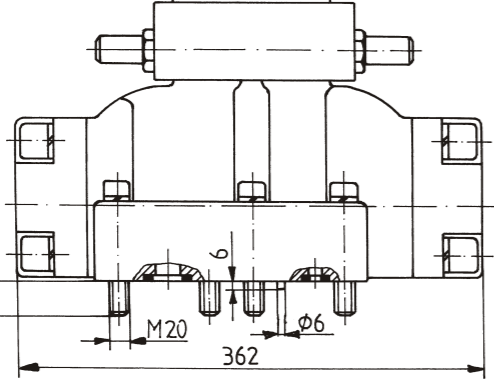
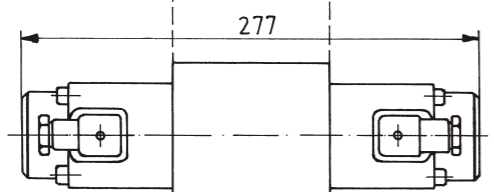
ND. 32



Symbol: C



Symbols: D, E, F, G, H, K, L, M



- ① O - ring 36,2x3
- ② O - ring 15,3x2,4

WARNING

Errors in the selection or use of the products and / or systems described, can cause serious personal injury and property damage. It is critical that all aspects of the application and the operating conditions and products chosen are analyzed and re-examined. Making own tests and evaluations, the user is the only one able to ensure compliance with performance, safety and cautionary use requirements.

The general sales conditions are provided by Revortex in the sales offer and in the order confirmation. Technical information, drawings, images and material characteristics in this catalog are just informative. Certifications or declarations must be required during the offer request phase. The logo is owned by Revortex. Descriptions, materials, product catalogs and price lists can be changed at any time without previous information.



Orders@revortex.eu



Technicalsupport@revortex.eu



Purchasing@revortex.eu

Revortex srl
 Sede legale: Via Bruno Tosarelli, 23 - 40055 - Villanova di Castenaso - BO - Italy
 Sede produttiva: Via Saragat, 26 - 40062 - Molinella - BO - Italy
 info@revortex.eu - revortex.eu
 PI 03738231202