

Technical Catalogue
Catalogo Tecnico

EN / IT

R3M125
series
Gear Motors



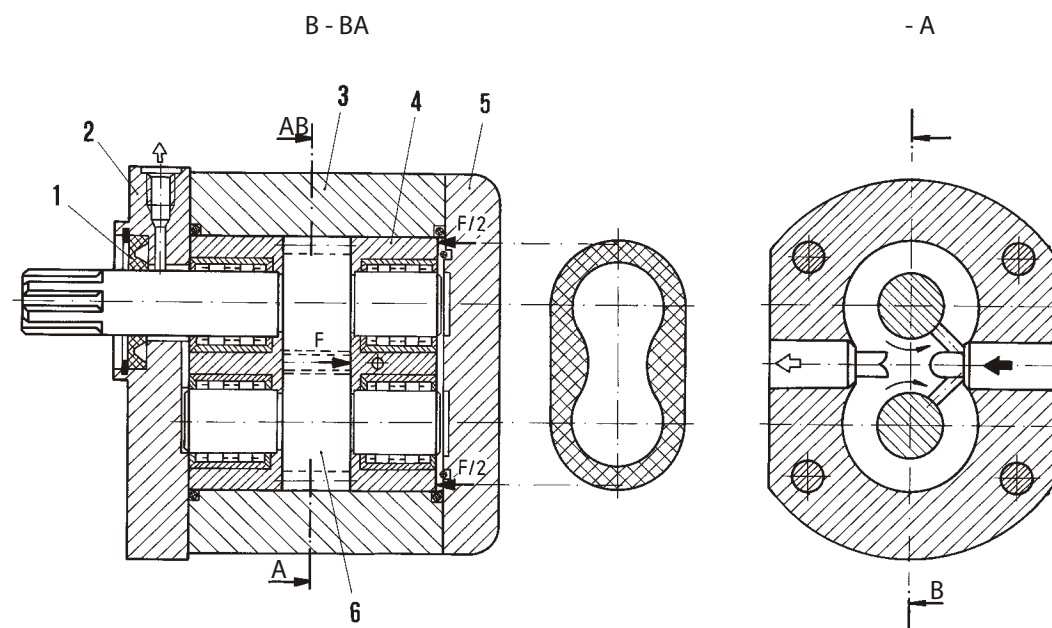
Revortex

Innovation + High Performance + Durability

- High torque
 - Special bearings
 - Simple and robust construction, with small overall dimensions
 - Satisfactory performance under the heaviest duties
 - Automatic regulation of axial clearance
 - High efficiency which is practically constant within the declared speed and pressure
 - Hydraulic motors are developed on the basis of the high-pressure gear pump series
- Motors with Revortex specifics



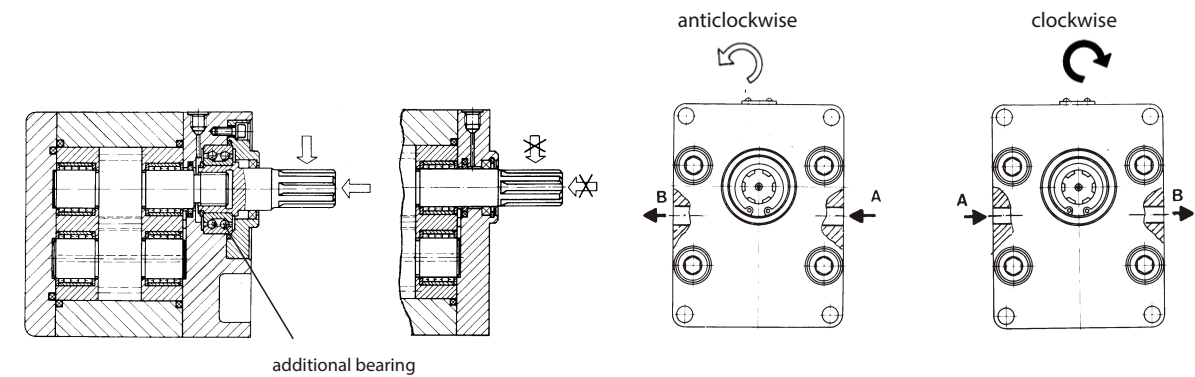
SECTION - MODE OF OPERATION



1. Shaft seal
2. Front cover
3. Housing
4. Bearing socket
5. Rear cover
6. Couple of gears

DRIVE ARRANGEMENTS

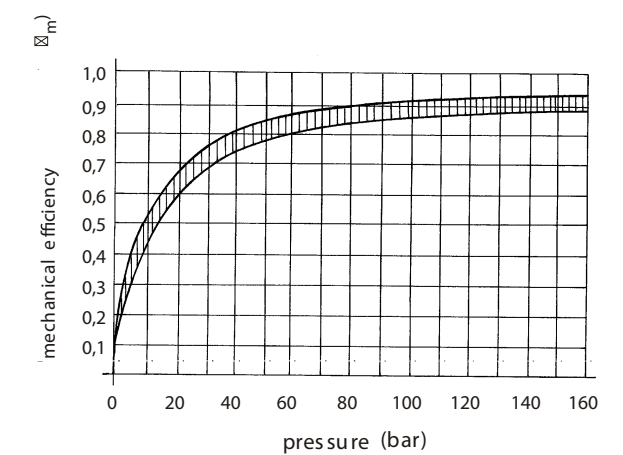
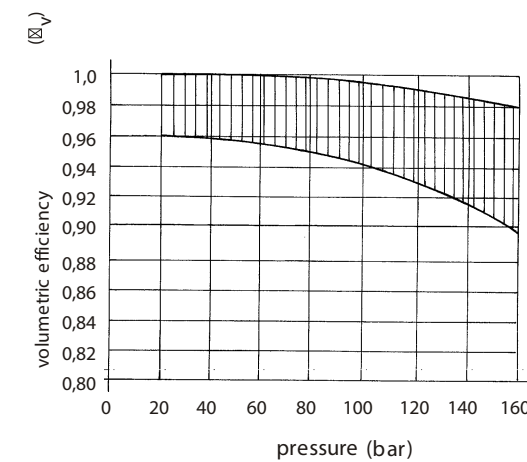
The torque is transferred by flexible coupling. There must be no radial or axial forces to the motor. When the torque is transferred by V - belt or gear wheel, driven is then must be motor with additional bearing in front cover (flange) chosen.



DIRECTION OF ROTATION

Clockwise or anticlockwise (looking on shaft). The pump may only be driven in the direction indicated. Direction of rotation is marked on the front cover.

CHARACTERISTIC DIAGRAMS (for oil of 37mm²/s viscosity, speed 1500 rpm)



TECHNICAL DATA

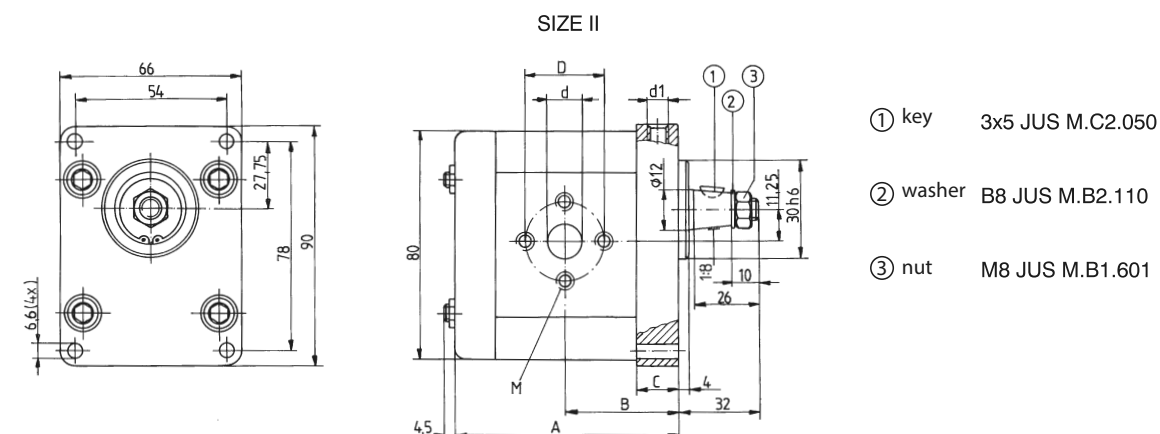
Symbol		
Rotation direction	anticlockwise and clockwise (both-direction)	
Mounting position	optional	
Ambient temperature (°C)	-20 ... +40	
Filtering fineness (µm)	25 ... 150	
Drain line pressure (bar)	1	
Working fluid	mineral oil	
	viscosity (mm ² /s)	optimal: 16 ... 90 / intermittent for starting: 800
	temperature (°C)	-20 ... +80

designation		displacement (cm ³)	torque (at p=160 bar) (daNm)	pressure		speed			mass (kg)
				nom.m	ax	min	nom.m	ax	
size	both-direction			(bar)		(min ⁻¹) (rpm)			
II	* R3M125.471.33	1,66	0,42	160	200	750	1500	3500	1,0
	* R3M125.472.33	2,66	0,67						1,1
	* R3M125.473.33	4,20	1,07						1,25
III	** R3M125.474.36	6,66	1,7			500	1500	3000	3,2
	** R3M125.475.36	10,66	2,7						3,7
	** R3M125.920.36	13,33	3,4						4,0
	** R3M125.476.36	16,66	4,25						4,4
IV	* R3M125.477.36	26,66	6,8			500	1500	2500	8,4
	* R3M125.478.36	33,33	8,4						8,8
V	* R3M125.479.27	42,0	10,68			500	1500	2000	13,5
	* R3M125.480.27	53,33	13,56						14,0
	* R3M125.481.27	66,66	16,95						14,5
VI	* R3M125.482.27	83,33	21,19						19,0
	* R3M125.484.27	106,66	27,13						20,0

* Motors with the needle bearings

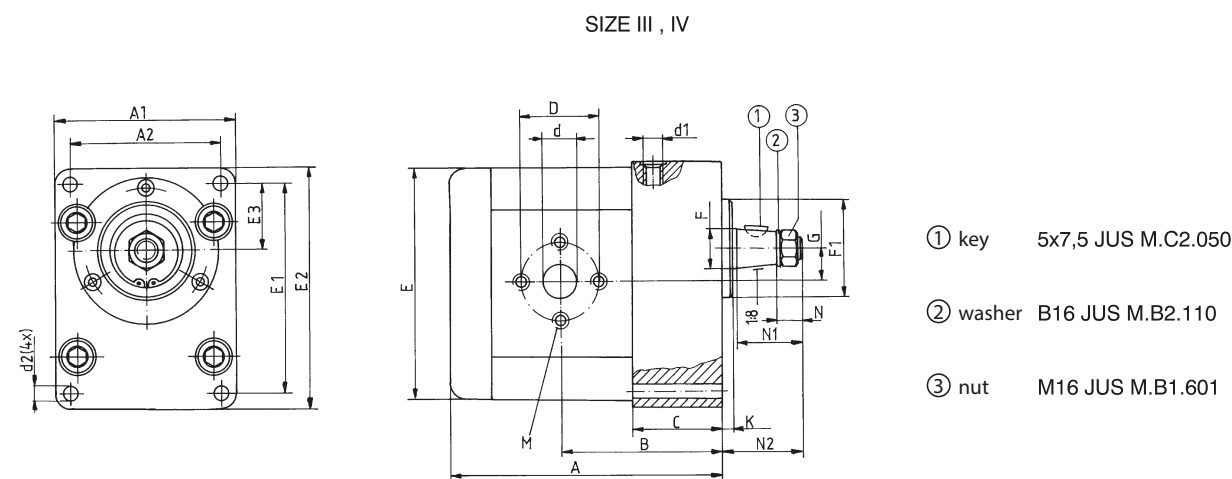
** Motors with the needle bearings; ball bearing in front cover

MOUNTING DRAWING (dimensions in mm)



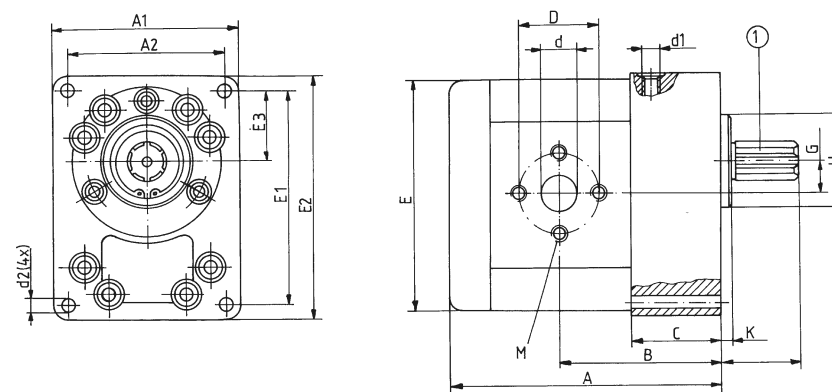
designation	displacement (cm ³)	A	B	C	drainage	inlet (outlet)		
					d1	Ød	ØD	M
R3M125.471.33	1,66	75,5	39,75	18	M12x1,5	7	26	M6/10
R3M125.472.33	2,66	78,5	41,25	18		8	26	
R3M125.473.33	4,20	83	43,5	18		10	28	

MOUNTING DRAWING (dimensions in mm)



designation	displacement (cm ³)	A	A1	A2	B	C	E	E1	E2	E3	F	F1	G	N	N1	N2	K	d2	inlet (outlet)			drainage
																			Ød	ØD	M	
R3M125.477.36	26,66	163	98	116	92,5	48	150	136	154	45,5	Ø25	Ø50h6	22,5	17	45	53	6	9	25	50	M10/18	M12x1,5
R3M125.478.36	33,33	168			97,5														25	50	M10/18	
R3M125.474.36	6,66	126	92	78	72	40	116,5	104,5	118,5	36	Ø18	Ø40h6	16,25	13	35	41	5M 9		12	30	M6/13	
R3M125.475.36	10,66	132			75														16	36	M8/16	
R3M125.920.36	13,33	136			77														20	40	M8/16	
R3M125.476.36	16,66	141			79														20	40	M8/16	

SIZE V, VI



designation	displacement (cm ³)	A	A1	A2	B	CE		E1	E2	E3	F	GN		Kd	2	inlet (outlet)			drainage
																Ød	ØD	M	d1
R3M125.479.27	42,0	192	140	120	111	55	181	160	181	52,5	Ø60h6	27,5	63	8	11	25	50	M10/18	M14x1,5
R3M125.480.27	53,33	198			114														
R3M125.481.27	66,66	205	160	134	117,5	65	218	192	218	63,5	Ø70h6	32,5	66	8	14	40	72	M12/20	M14x1,5
R3M125.482.27	83,33	208			121,5														
R3M125.484.27	106,66	216			125,5														

WARNING

Errors in the selection or use of the products and / or systems described, can cause serious personal injury and property damage. It is critical that all aspects of the application and the operating conditions and products chosen are analyzed and re-examined. Making own tests and evaluations, the user is the only one able to ensure compliance with performance, safety and cautionary use requirements.

The general sales conditions are provided by Revortex in the sales offer and in the order confirmation.

Technical information, drawings, images and material characteristics in this catalog are just informative.

Certifications or declarations must be required during the offer request phase.

The logo is owned by Revortex.

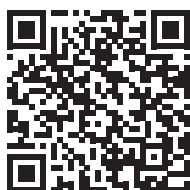
Descriptions, materials, product catalogs and price lists can be changed at any time without previous information.



Orders@revortex.eu



Technicalsupport@revortex.eu



Purchasing@revortex.eu

Revortex srl

Sede legale: Via Bruno Tosarelli, 23 - 40055 - Villanova di Castenaso - BO - Italy

Sede produttiva: Via Saragat, 26 - 40062 - Molinella - BO - Italy

info@revortex.eu - revortex.eu

PI 03738231202