

Technical Catalogue
Catalogo Tecnico

EN / IT

R3M125
series

Hydraulic Gear Motors
with Brake

Revortex

Innovation + High Performance + Durability

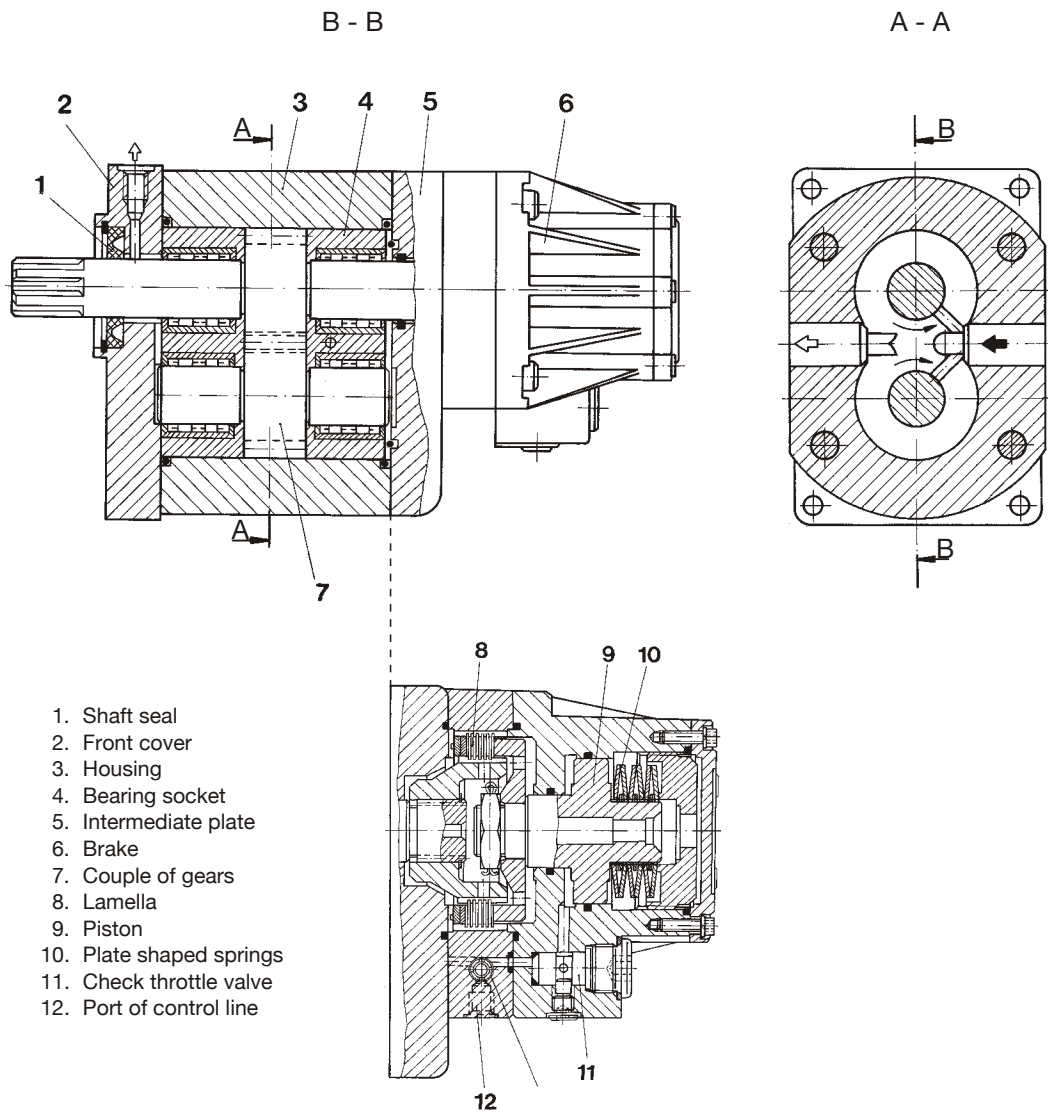
Gear motor R3M125 with brake

HIGH PRESSURE, WITH OUTER GEARING

- Standard gear motor with multiple brake
- High torque
- Special bearings
- Simple and robust construction, with small overall dimensions
- Automatic regulation of axial clearance
- High efficiency which is practically constant within the declared speed and pressure
- High durability brake lamellas - many braking without exchange
- After action of hydraulic fluid has been ceased, motor remain in

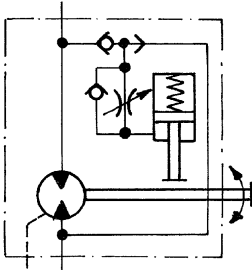
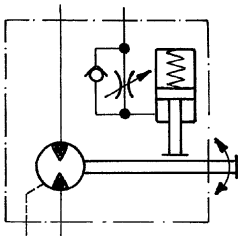


SECTION - MODE OF OPERATION



B B

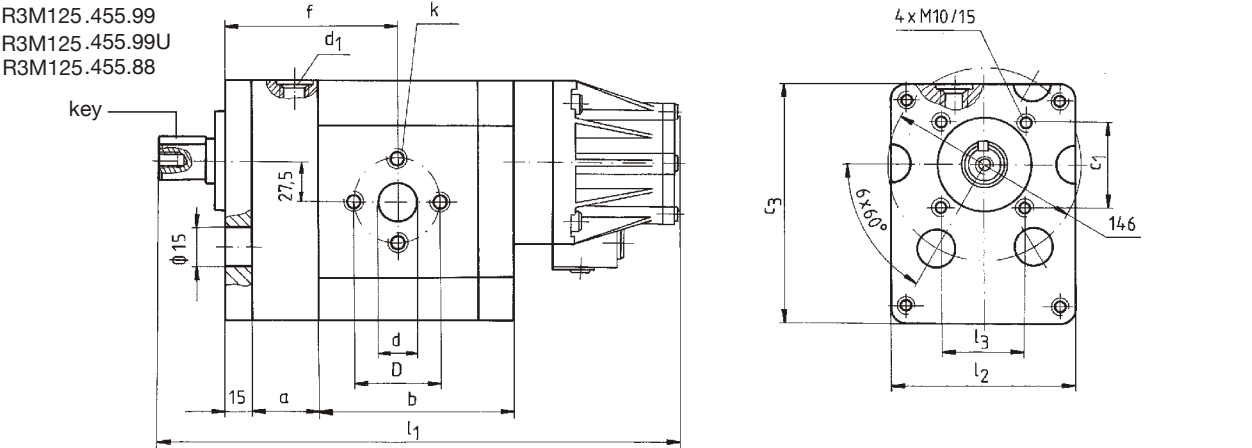
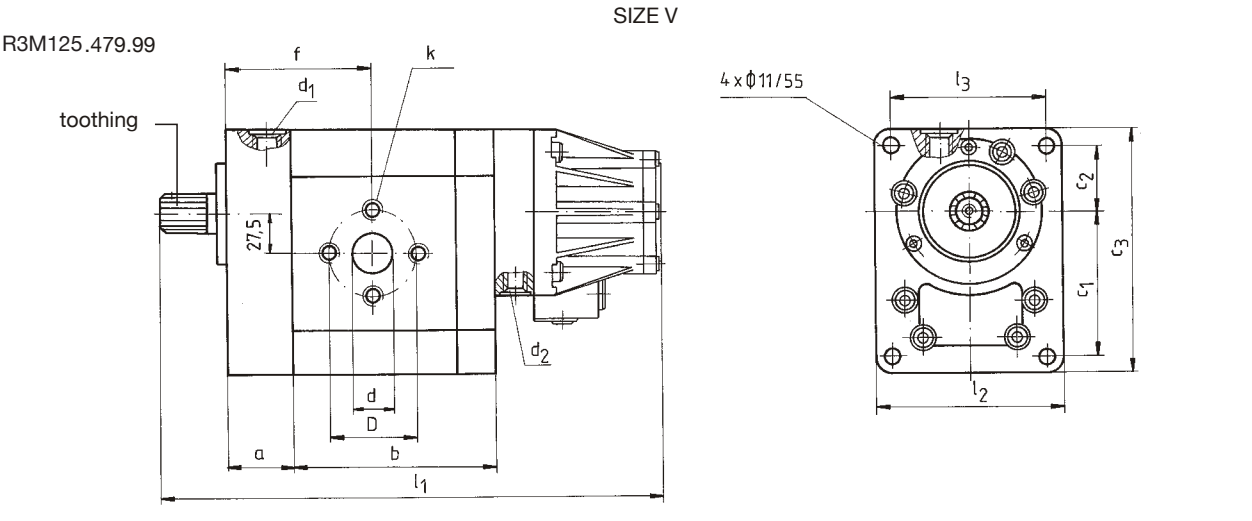
TECHNICAL DATA

Designation		R3M125 .455.99U	R3M125 .455.99	R3M125 .455.88	R3M125 .479.99	
Symbol						
		internal control line			external control line	
Line connection		by flanges				
Rotation direction		anticlockwise and clockwise (both-direction)				
Mounting position		optional				
Ambient temperature (°C)		-20 ... +40				
Filtering fineness (µm)		25 ... 150				
Drain line pressure (bar)		1				
Working fluid	mineral oil					
	viscosity (mm ² s)	optimal: 16 ... 90/ intermittent for starting: 800				
	temperature (°C)	-20 ... +80				

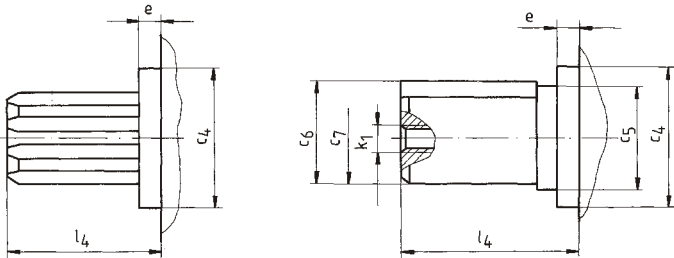
designation		displacement (cm ³)	torque (at p=160 bar)		pressure		speed			mass (kg)
			obrtni drive	ko~ni brake	nom.m	ax	min	nom.m	ax	
size	both-direction		(daNm)		(bar)		(min ⁻¹) (rpm)			
V	*R3M125.479.99	42,0	10,698	0 ... 20	160	200	500	1500	2500	
	*R3M125.455.99									
	*R3M125.455.99U	75,3	19,175	0 ... 20						
	*R3M125.455.88									

* Motors with the bearing located in the front cover

MOUNTING DRAWING (dimensions in mm)



Size	designation	displacement (cm) ³	a	b	c1	c2	c3	L1	L2	L3	f	inlet (outlet)			drainage	control
												Ød	ØD	K		
R3M125.479.99		42,0	140					327			111	25	50			M16x1,5
R3M125.455.99		75,3	55	157	107,5	52,5	181	344	140	120	119,5	32	62	M10/18	M14/1,5	-
R3M125.455.99U								344			119,5					
R3M125.455.88								360			134,5					



Size	designation	e	ØC4	ØC5	C6	ØC7	L4	K1	toothing DIN 5463	key JUS M.C2.062
R3M125.479.99		8	60h6	-	-	-	63	-	B6x23x28	-
R3M125.455.99									23f7x28a11x6e8	
R3M125.455.99U										
R3M125.455.88		6	80h6	25	26,9	24,6	51	M8/16	-	A8x7x40

WARNING

Errors in the selection or use of the products and / or systems described, can cause serious personal injury and property damage. It is critical that all aspects of the application and the operating conditions and products chosen are analyzed and re-examined. Making own tests and evaluations, the user is the only one able to ensure compliance with performance, safety and cautionary use requirements.

The general sales conditions are provided by Revortex in the sales offer and in the order confirmation. Technical information, drawings, images and material characteristics in this catalog are just informative. Certifications or declarations must be required during the offer request phase. The logo is owned by Revortex. Descriptions, materials, product catalogs and price lists can be changed at any time without previous information.

B



Orders@revortex.eu



Technicalsupport@revortex.eu



Purchasing@revortex.eu

Revortex srl
Sede legale: Via Bruno Tosarelli, 23 - 40055 - Villanova di Castenaso - BO - Italy
Sede produttiva: Via Saragat, 26 - 40062 - Molinella - BO - Italy
info@revortex.eu - revortex.eu
PI 03738231202